

# Feeding Families & Fueling Hope



**2025** ANNUAL  
REPORT

[www.broomfieldfish.org](http://www.broomfieldfish.org)



**Broomfield  
FISH**

# CARRYING THE WEIGHT

Take a standard pitcher filled with water and think about what it might weigh. Five pounds? Eight pounds? Think about how long you could hold it up in the air. A minute? An hour? A day? The weight of the pitcher actually **does not matter** for this question. What does matter is whether you have to hold it up **alone**.

Many people visit FISH on their worst day, with no food in their cupboards, no idea how they will pay next month's bills, and exhausted from working two jobs. They feel like they've been holding up that water pitcher alone for weeks, months, or even years. These are our neighbors who may be wary of asking for help, but who come to our food and family resource center because they must, in order to survive.



Our mission at Broomfield FISH is to help our neighbors meet their basic human needs, but our most important job is to make them feel welcomed, supported, and most of all, like they are not alone in their struggles. In the past five years at FISH, we have set an intentional goal of being less transactional. We are focused on building relationships, strengthening community support networks, and working alongside neighbors on pathways to stability and economic success. We do offer food, resources, and programming, but in a way that centers on kindness, choice, dignity, and hope.

With deep gratitude for everyone who helps lift up the pitchers in Broomfield,  
*Dayna Scott, Executive Director and Kristen Kelly, Board Chair*

“

Imagine you're running out of strength to keep going and you're about to give up, and then you arrive at Broomfield FISH and you leave with hope. Knowing I'm not alone, and that my community helps me in vulnerable moments of my life, gives me the will to go on.

”

~ Recent FISH Participant

Broomfield FISH's mission is to meet our neighbors' basic human needs and provide them with the hope and tools to rise out of poverty.

## BOARD & STAFF



**Dayna Scott**  
Executive Director



**Sharin Oliver**  
Operations Manager



**Chyla Graham**  
Consultant  
Bookkeeper



**Mike Lutz**  
Food Operations  
Manager



**Ryan Steele**  
Food Operations  
Coordinator



**Cherise Clark**  
Marketplace &  
Warehouse Assistant



**Amir Ghaibeh**  
Truck Driver and  
Warehouse Assistant



**Audrey Johnson**  
Bilingual Project  
Specialist



**Eleanor Edwards**  
Special Projects  
(Volunteer)



**Scott Boyd**  
Participant Programs  
Manager



**Erin Reynolds**  
Bilingual Family  
Development Coordinator



**Sarah Dzioba**  
Participant  
Programs Advocate



**Tangi Lancaster**  
Bilingual Participant  
Programs Advocate



**Vanessa Lopez**  
Bilingual Participant  
Programs Advocate



**Katarina Villalta**  
Bilingual Participant  
Programs Advocate



**Crystal Egli**  
Community  
Engagement Manager



**Jamie Osborne**  
Volunteer and Events  
Coordinator



**Stacey Schmuck**  
Donor Relations  
Specialist



### 2025 BOARD OF TRUSTEES

Stephanie Planchard, Chair  
Kelly Galloway, Vice Chair  
Dan Kusel, Board Treasurer  
Clinton Carlisle, Board Secretary

Amanda Gordon  
Amy Hendershot  
Andrea Garcia  
Cindy Williams

Kristen Kelly  
Luciana Chama  
Mayra Martinez  
Nick Pontejos

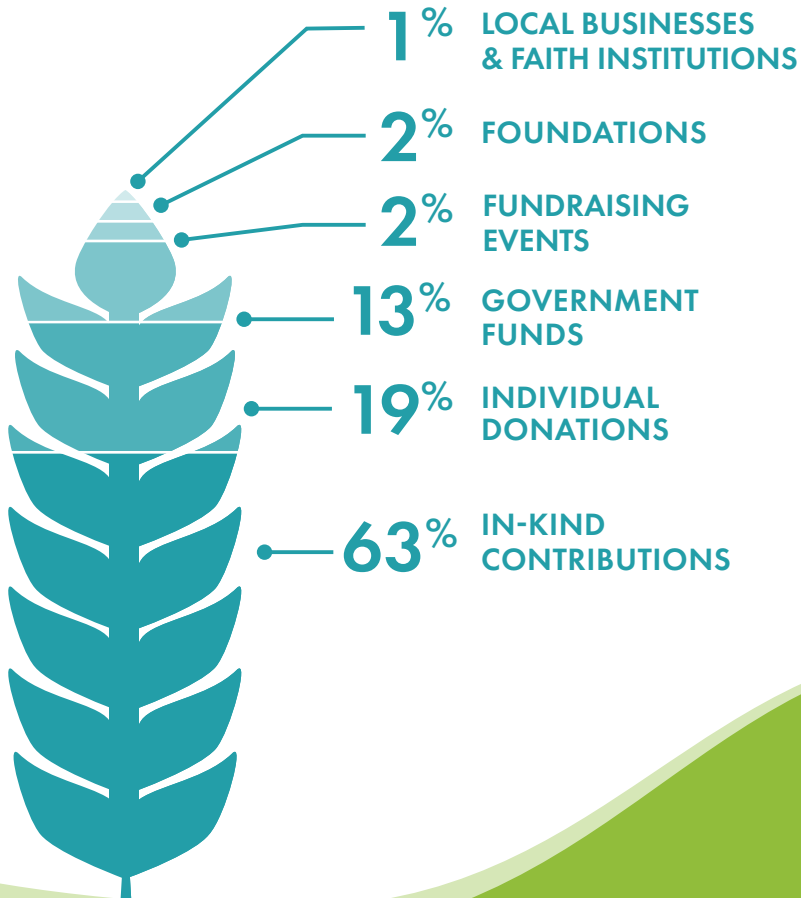
### 2025 CORPORATE ADVISORY BOARD

Nick Powell  
Amy Bockman  
Emily Crouse

Steve Reynolds  
Ron Lampo  
John Beirise

Brenda Mares  
Dr. Norris Golberg

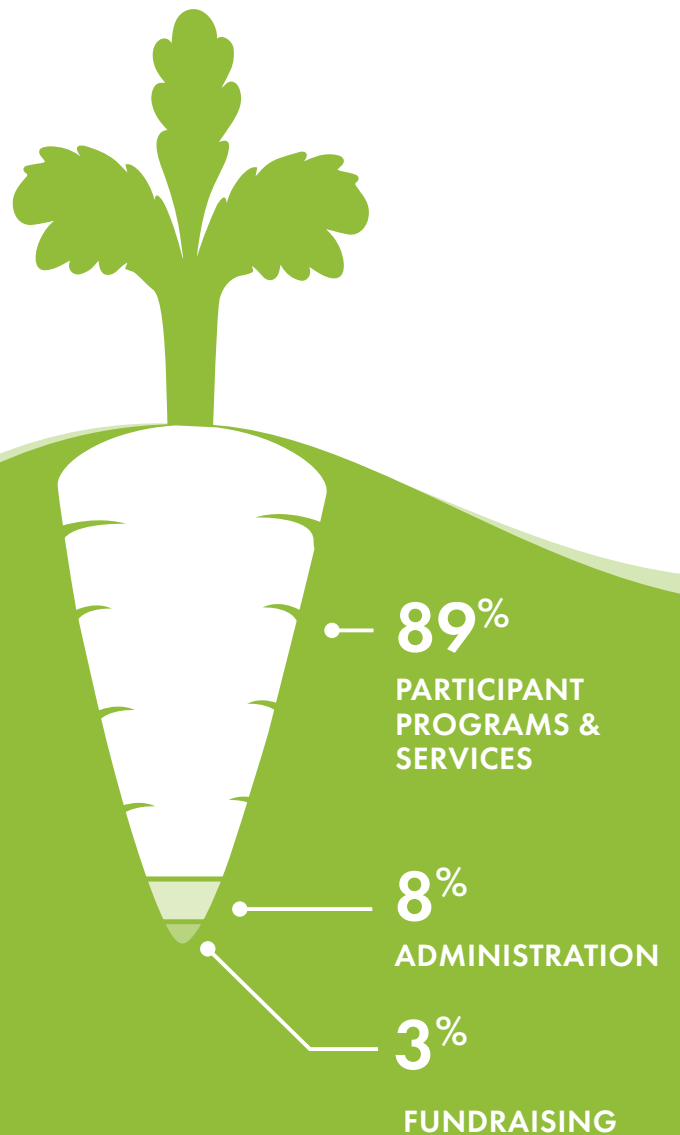
# 2025 INCOME CATEGORIES



TOTAL BUDGET FOR 2025:  
**\$5,399,664**

Data taken from FISH's audited 2025 financial statements.

# 2025 EXPENSE CATEGORIES



**89¢**

of every dollar went directly to support low-income Broomfield residents.





## HERE'S HOW WE HELP PEOPLE



### PREVENTING HUNGER

Food and nutrition security are essential to mental and physical health; however, many people in our community go hungry or do not have enough food to meet their nutritional needs. FISH helps neighbors with low incomes access the fresh, healthy food options that are critical to their wellbeing. FISH has a cost-free, self-shop marketplace where participants can select food for their households with dignity and respect. We also work with Community Food Share to host a Mobile Pantry in Broomfield twice a month. In FY2025, FISH distributed 1,720,451 pounds of food to more than one in five neighbors in need.



### STABILIZING HOUSING

Lack of affordable housing is the number one driver of need in Broomfield. Most FISH participants are housed, but many report spending 75% or more of their monthly income on housing costs, leaving little for other necessities. Through our Keeping Families and Keeping Seniors Housed programs, we stabilize residents in their existing housing to prevent homelessness. In FY2025, FISH helped 688 Broomfield residents keep their safe housing! We also partnered with the City and County, Almost Home, Broomfield Housing Alliance, The Refuge, faith based groups, and other nonprofits through the Broomfield Housing Solutions Forum to work on sustainable, creative options to address our housing crisis.



### SUPPORTING ECONOMIC SUCCESS

FISH offers emergency financial assistance, resource navigation, and family development programs that provide neighbors with the support that is critical to achieve whole-family success. As a Family Resource Center, we foster the health of our community by focusing on strength-based ways to help residents achieve economic success. We partner with more than 30 other organizations to offer services such as access to health, mental health and early childhood care, employment and workforce support, public benefits navigation, and money management. Our Advocates also work one-on-one with participants to set stability goals.



# COLLABORATION IS OUR SUPERPOWER

Collaboration remains at the heart of how FISH serves Broomfield. Our vital community partnerships allow us to provide wrap-around support so families can easily navigate the resources they need to achieve stability and long-term economic success. Rather than simply handing out lists of referrals, we focus on warm hand-offs to trusted partner organizations so that families can easily access the highest-quality support possible.



## SOME KEY PARTNERS INCLUDE:

- Almost Home
- Broomfield Community Foundation
- Broomfield Early Childhood Council
- Broomfield Department of Public Health and Department of Human Services
- Broomfield Rotary Clubs/ Imagination Library
- Broomfield Workforce Center
- Brothers Redevelopment
- Center for People with Disabilities
- City and County of Broomfield
- Clinica Family Health and Wellness
- Colorado Community Health Alliance
- Community Food Share
- Cultural Brokers Advocates
- Easyride
- Energy Outreach Colorado
- Hunger Free Colorado
- Kiwanis
- A Precious Child
- The Refuge
- Ride Broomfield
- Safehouse Progressive Alliance for Nonviolence
- Senior Resources of Broomfield
- Sunshine Home Share
- Team Select
- Wee Cycle



One of FISH's strongest partnerships is with the City and County of Broomfield. A great example of this is our collaboration with the Department of Public Health and the county-wide Health Ambassador Program. Several local agencies, including FISH, meet monthly to coordinate health education and awareness events across the county. Through the ambassador program, county staff came to FISH to host an on-site free vaccine clinic so participants could protect their families' health. Another example of collaboration is with the Workforce Center. They sponsored community job fairs that connected dozens of participants with local employers, training opportunities, and workforce resources. As a family resource center, bringing resources onsite makes it easier for neighbors to access care and explore career options in a familiar, supportive environment. This also advances our mission to pair food and housing stability with health and employment pathways that support long-term economic success.

# FISH'S COMMUNITY TEACHING GARDEN

In 2025, FISH's garden beds were a hub of activity, connection, and learning! With support from the CO Garden Foundation, we expanded our growing space by partnering with the Salvation Army. This allowed us to increase the number of raised beds, diversify crops, and grow more than 1,400 pounds of much-needed fresh produce for our neighbors in need. We also increased our volunteer base and had more than 45 people working to establish beds, weed plants, and harvest vegetables for our Marketplace.



An important part of our garden is promoting nutrition and healthy living. Volunteers led cooking demonstrations with garden bounty, offered tours of the garden with kids' camps, and created recipe cards for the Marketplace that showed participants how to use some of the less familiar produce like eggplant, garlic scapes, and epazote. One participant said, "I am diabetic so I try to eat protein and vegetables. FISH has helped me with having vegetables that I can't afford to buy at the store." During the kids' camp, one of the children tried pesto for the first time and declared, "I love basil!"

In 2026, we will launch an "Adopt A Garden Bed" program at the Salvation Army where people can sign up to support our effort. We also want to increase community donations from local residents who grow and donate fresh produce to our Marketplace.



Broomfield FISH's GRO Program (Gardeners Reaching Out) invites individuals, families, and groups — students, coworkers, clubs, and more — to "adopt" one of 20 raised beds in our community garden at The Salvation Army for the full growing season. GRO adopters are responsible for planting, weeding, tending, and harvesting their bed, with instruction, guidance, and support from FISH's garden team along the way. Every pound of produce grown goes directly to neighbors shopping in FISH's Marketplace — at no cost to them.

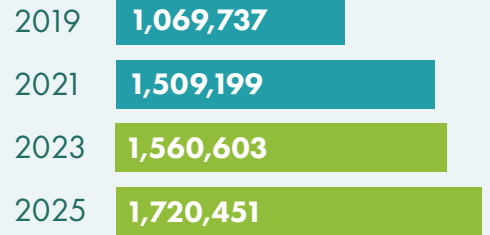


# TRENDS AT BROOMFIELD FISH

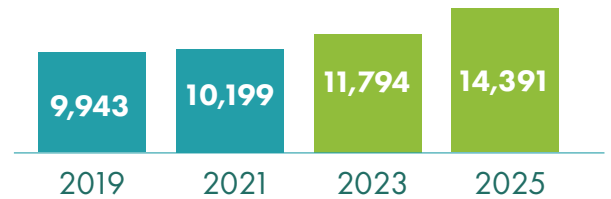


## POUNDS OF FOOD DISTRIBUTED TO THOSE IN NEED

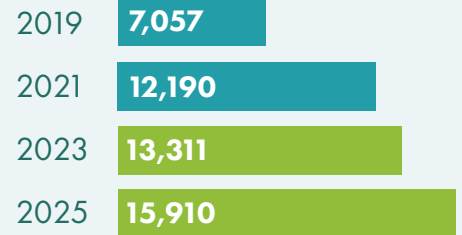
None of our numbers include spoilage



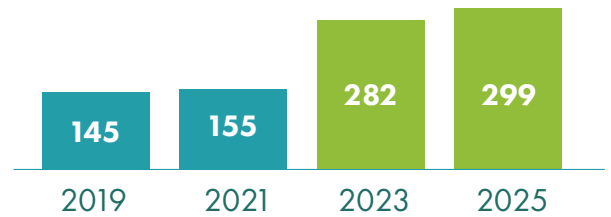
## NUMBER OF VISITS TO FISH'S MARKETPLACE



## INDIVIDUALS WHO RECEIVED FOOD FROM FISH

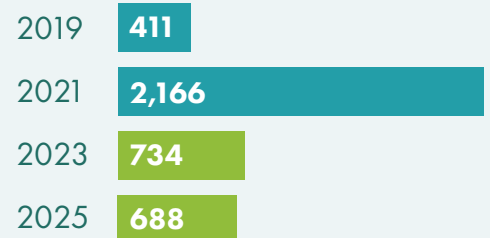


## PEOPLE HELPED WHO WERE EXPERIENCING HOMELESSNESS

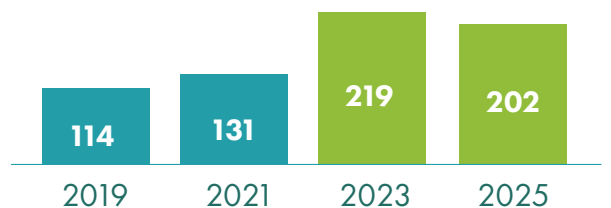


## PEOPLE HELPED THROUGH HOUSING STABILITY PROGRAMS

The number of people helped is directly tied to available funding and not an accurate reflection of the true need, which has continued to skyrocket. Limited funding for FISH housing programs is why these numbers are less in 2025.



## FAMILIES RECEIVING UTILITY ASSISTANCE



# STORIES OF STRENGTH

Betty Avera is one of our Broomfield neighbors, who, at 78 years old, suddenly found herself experiencing homelessness for the first time. After a lifetime of stability, Betty lost nearly everything in a sudden cascade of events connected to her husband's advancing dementia, and ended up living in a car with her son, his fiancé, and her two dogs. Although that chapter is now several years behind her, Betty recalled through tears, "It was hard, but we were together. And in Broomfield, we quickly learned something important: even if you are without a home, you are never without a neighbor."

That neighbor came in the form of someone from The Refuge's outreach program, who found them and provided food, clothing, blankets, and neighborly love. More neighbors at The Refuge then introduced Betty's family to Broomfield FISH, where they shopped for groceries and essential items until they were back on their feet. Betty is one of the thousands of neighbors FISH supports each year—last year alone, FISH's Family Resource Center served one out of every five people who live in Broomfield with food, emergency financial assistance, and connections to community partners. Embodying FISH's mission to "meet our neighbors' basic human needs and provide them with hope and tools to rise out of poverty," Betty now gives back as both a donor and a storyteller.

Betty's journey is one of many stories that local artist and former FISH participant Andrea Gamboa is determined to bring into focus. Andrea experienced homelessness in Broomfield for two years and turned her camera toward the people she met along the way. Her portable, interactive photo exhibit, "The Streets Have Names," features striking black-and-white portraits of neighbors experiencing homelessness—many of them Broomfield FISH participants, including Betty. The exhibit travels throughout the community by request—to workplaces, board rooms, book clubs, schools, and faith communities—to gently but powerfully remind us that, even in the "#1 place to live in the west," there are unhoused neighbors in our midst whose stories, like Betty's, are filled with courage, resilience, and hope.

Together, Betty's words and Andrea's images invite us to look closer, listen more deeply, and recognize the humanity in every neighbor who walks through FISH's doors—or sleeps in a car nearby. To hear Betty share her story in her own voice and to see Andrea's work come to life, scan the QR code to watch the short film inspired by "The Streets Have Names."



Betty Avera

"It was hard, but we were together. And in Broomfield, we quickly learned something important: even if you are without a home, you are never without a neighbor."

~ Betty Avera



Andrea Gamboa

Andrea's portable, interactive photo exhibit featured in "The Streets Have Names" is available for organizations to reserve and display, to inspire conversation and action around homelessness.

SCAN TO WATCH  
THE VIDEO



William Stephenson

## Lawrence "William" Stephenson

(July 8, 1952 - January 1, 2026)

William Stephenson was always first in line on his shopping day at FISH and eager to share his quick wit and intellect. He spent many years living in his car, but with the support of multiple organizations working together in Broomfield, was able to secure permanent housing in a senior living residence. Sadly, William passed away this year, but his passion for positive community impact left a deep impression on everyone who knew him. He was one of a kind and his legacy will be remembered by all.

William was one of the many unhoused neighbors Andrea Gamboa featured in "The Streets Have Names." His portrait from the exhibit now hangs in FISH's reception area.

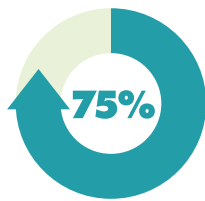
# AFFORDABLE HOUSING: THE MOST CRITICAL NEED

At FISH, we see the housing crisis every day in the faces of our neighbors who struggle to pay their rent or mortgage. The housing crisis is truly an emergency—like a flood or a fire— with desperate families on the brink of eviction, or worse, already living in their cars or on the streets. Over the last year, FISH has seen a growing number of seniors on fixed incomes and single parent families with children who are experiencing homelessness. The lack of income-aligned units in our county, combined with rising costs of rent, make it nearly impossible for low income residents to survive. Housing is the number one driver of poverty and need, and FISH participants report spending more than 75% of their monthly income on housing expenses.

## HOUSING IS THE NUMBER ONE DRIVER OF POVERTY AND NEED

AVERAGE RENT IN 2025  
IN BROOMFIELD WAS

**\$2,400**  
/ MONTH



ON AVERAGE FISH PARTICIPANTS REPORTED  
**SPENDING MORE THAN 75%**  
OF THEIR MONTHLY INCOME  
ON HOUSING COSTS IN 2025

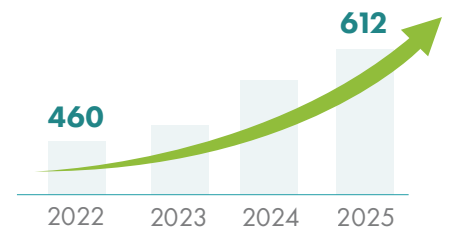
## EVICION RATES ARE SKYROCKETING AND EXACERBATING AN ALREADY DEVASTATING HOMELESSNESS PROBLEM.



**NEARLY  
300**

BROOMFIELD  
RESIDENTS EXPERIENCED  
HOMELESSNESS IN 2025.

IN 2025 BROOMFIELD  
RESIDENTS EXPERIENCED AN  
**INCREASE IN  
EVICION FILINGS**



**193**  
JUDGMENTS FOR  
POSSESSION  
GRANTED IN 2025.

JUDGMENTS FOR POSSESSION  
GRANTED IN 2024 WERE **84**

THAT'S AN  
INCREASE OF **130%**

\*A judgment for possession is a final court order stating that a landlord has won an eviction case and is legally allowed to take back control of their property.

## WE ENCOURAGE YOU TO GET INVOLVED AND BE A PART OF THE SOLUTION!

The Broomfield Housing Solutions Forum is a collaboration of nonprofits, government agencies, faith-based institutions, businesses, and individuals working together to find innovative, community-driven solutions to Broomfield's housing challenges.

LEARN MORE ABOUT THE BROOMFIELD  
HOUSING SOLUTIONS FORUM



# YOUTH ENGAGEMENT SQUAD

Broomfield FISH's Youth Engagement Squad (YES) is growing the next generation of community leaders in Broomfield. This group of 32 students, ranging from 8th to 12th grade, partners with FISH throughout the year to learn about poverty, build leadership skills, and make meaningful change—from volunteering at food drives and community events to supporting the marketplace and raising awareness about housing instability. Each YES member is also required to complete an independent service project, putting their learning directly into action in the Broomfield community.



*I've learned how important community is in creating movements and solving issues like food security. Communities like FISH support not just their participants but also volunteers, staff, donors, and community members. Poverty exists. It's in our backyard and it affects our community every day.*



**Neha Pesaramelli, 12th grade**  
For her service project, Neha created 15 recipe sheets for healthy meals that could be made using ingredients at FISH, including fresh vegetables from FISH's teaching garden.

*I have learned about the amount of people struggling in the Broomfield community. I want community members to know that not all poverty is obvious and that some people who don't seem like they are struggling might be.*



**Isaac Han, 9th grade**  
For his service project, Isaac volunteered at FISH's Turkey & Ham Drive, the Broomfield Days Parade, and the Day of Empowerment.

*"During my time with Broomfield FISH, I've learned that service does not need to be grand or elaborate to make an impact in our communities. Poverty is not a choice, and even the smallest acts that support our neighbors can make a meaningful difference. It's not about being recognized, it's about helping make your community a better place for everyone in it."*



**Lily Hyser, 10th grade**  
For her service project, Lily created and launched the Bright Futures Book Club, with the goal of sparking a love of reading in elementary-school-aged children. To bring it to life, she coordinated with local authors to donate books and appear as featured guests, sharing their work in person with young FISH participants.

What makes FISH's Youth Engagement Squad truly special is the ripple effect each student creates. A service project doesn't end when the work is done—it plants seeds in the community that continue to grow long after the school year is over. A child who falls in love with reading may become a teacher, a librarian, or an author. A thoughtful recipe card may evolve into a Thanksgiving tradition. The long-term impact of YES is difficult to quantify precisely because it is so far-reaching—young people creating meaningful change that extends well beyond any single project or school year. With each new class of YES members, Broomfield gains another cohort of informed, compassionate, and action-oriented community leaders who are already making their mark.

FISH is fortunate to have widespread support from our generous community!  
Special thanks to everyone who contributed their time, talents, and  
resources to FISH this past year.

## GRANTS

Albertsons/Safeway Foundation

Anschutz Family Foundation

Arista Community Foundation

BOK Financial

Broomfield Community Foundation

Broomfield Department of Human Services

Broomfield Rotary Club

Catholic Relief Services Rice Bowl

Colorado Department of Local Affairs -  
Division of Housing

City and County of Broomfield -  
Housing Division

Colorado Community Health Alliance

Colorado Department of Early Childhood

Colorado Department of Human Services

Colorado Department of Public Health  
and Environment

Colorado Garden Foundation

Colorado Health Institute

Colorado Housing and Finance Authority (CHFA)

El Pomar Foundation

Energy Outreach Colorado

Feeding Colorado

Food Pantry Assistance Grant

Mabel Y Hughes Charitable Trust

Intermountain Health

Kimley-Horn Foundation

Metro Denver Health Institute

Mile High United Way

Namaste Foundation

Oregon Foundation

Paz Family Foundation

Provecho Collective

Rotary Club of Broomfield Crossing

RTD Transit Assistance Grant

Starbucks Foundation

TZP Cares Foundation

Virginia Hill Foundation



Food and housing are the building blocks of health and well-being. FISH is proud to partner with several local hospitals, most notably Intermountain Health and UC Health, in our efforts to offer nutritious food and housing stability programs.

The heart of Broomfield FISH is our dedicated volunteers who show up week after week, and year after year, to make sure neighbors have what they need. Our volunteers receive deliveries, stock shelves, welcome participants, carry groceries to their cars, support office operations, represent FISH at community events, and more. In 2025, FISH volunteers gave **19,210 hours**— the equivalent of **9.2 full-time staff members** and **\$668,438** in labor value. To every volunteer who has given their time to FISH: you are the reason neighbors feel welcomed, seen, and supported when they walk through our doors. *Thank you.*



FISH appreciates everyone who donated in 2025, including those who are not named here or donated anonymously.

## 2025 MAJOR GIFT DONORS

Steven & Sarah Adams  
Keith Adamski & Karen Jass  
Ron & Janan Alford  
Marsha Allen  
Altitude Energy Partners  
Fred & Kathy Ambrusch  
Milton Anderson  
Anthem Highlands  
Anthem Ranch Community & Clubs  
Janice Antranikian  
Apple Tree Christian Preschool & Kindergarten  
Archdiocese of Denver  
Bruce & Mary Ann Archinal  
Robert & Lynn Arendt  
Rodney Arreola  
Aspen Creek PreK-8 School  
BAE Systems  
Bairrington Family  
Bale Family  
Ball Family  
Carolyn Balmer  
Wendy & William Bangs (The Knapp Fund)  
Barr Family  
Kenneth & Margaret Basnett  
Beautiful Savior Lutheran Church & School  
John & Janie Beirise  
Virginia & Thomas Belval  
Rick & Chris Bergsieker

Jeffrey Berlin  
Jaydip & Roshmi Bhaumik  
Bickel Family  
Birch Elementary School  
Boss Printing  
Boss Printing  
Robert & Gail Boyd  
Terry & Vicki Brandt  
Lisa Bressler  
David & Sally Brimmer  
Broomfield Community Center  
Broomfield High School  
Broomfield Lifestyle  
Broomfield Lions Club  
Broomfield Presbyterian Church  
Broomfield Rotary Club  
Broomfield United Methodist Church & Fellowship Groups  
Sarah Buckman  
George Burgess  
Burnside Family  
Elaine Butler  
Tom & Boni Callaway  
Calvary Evangelical Free Church  
Amanda Campbell  
Carlisle Family  
Carlisle Barnett PC  
Michael & Sherida Carpenter  
Lauren Cashatt  
Michael & Kimberly Cavanagh  
George Cavanaugh  
Chama Family  
Cheryl & Craig Chamberlain  
Sharon Chase  
Cheney, Galluzzi & Howard  
Chick-fil-A  
Children's Hospital Colorado  
Justin & Amanda Choi

Church of the Beloved  
Mary Cirbo  
City & County of Broomfield  
City & County of Broomfield Recreation Services & Preschool  
Terry & Nicci Clark  
Ken Claussen  
Clifford Family  
Pam Cobb  
Code Blue Computing  
Tyson Cogley & Dana Clouse  
Dennis & Julie Collins  
Colorado Dog Academy  
Colorado Housing & Finance Authority  
Community Food Share  
Austin Connolly  
Karen Connolly  
Conscious Alliance  
CorePower Yoga  
Courtyard Apartments  
Brian & Megan Cox  
Mark Cox  
Coyote Ridge Elementary School  
Crescent Grange  
Peter & Carolyn Crouse  
David & Jennifer Culbertson  
Catherine Curtis  
Pat Daley  
Deanne Davies  
Davis-Siggs Family in Honor of Gus  
Carol Day  
Delta Hotels by Marriott  
Paul Detlefsen  
Donald Dillard

Discovery Christian Church  
Robert & Doris Dittmer  
Doc Automotive  
Dog Food Ladies  
Daniel Dolan  
Barbara Donahue  
Karen Douglass  
Viji Duncan  
Clark & Kimberly Dunn  
Richard & Kathy East  
Jeffrey & Mary Eggleston  
Mark & Barbara Eggleston  
Elevated View Partners  
Elevations Credit Union  
Elliott Family  
Emerald Elementary School  
Carol K. Engler Foundation  
Ent Credit Union  
EP Wealth  
Ertl Family  
Fairway Independent Mortgage  
Featherstone Family  
Fidelity Investments  
Wendy & Hans Fiedler  
Jon & Glenda File  
First Interstate Bank  
FirsTier Bank  
Stephen Fisher & Lucia Berte  
Kenneth Fitch & Lee Giacoletto  
Daniel Flaherty  
FlatIron Crossing  
Flatirons Park Apartments  
Joe & Ann Foley  
Food Security Network



Broomfield FISH is proud to partner with Broomfield Crossing Rotary and Broomfield Rotary Club — two organizations whose commitment to service, integrity, and community runs deep. Year round, Broomfield Rotarians show up through grant funding, event sponsorships, food donations, and hands-on volunteering, both as groups and as individuals. Their fellowship and dedication to Broomfield are woven into everything we do, and we are grateful for their partnership.

Lawrence Foster & Nancie Connolly  
 Frenzel Family  
 Fresca Fresh Foods  
 Daniel & Annette Frey  
 Friends of Jan  
 Front Range Barracudas  
 Swim Club  
 Michelle Full  
 Gallagher Family  
 Galloway Family  
 Ted & Mary Garten  
 Gate 'N Green  
 Gdowski Family  
 Brad Gibson  
 Girl Scouts of the USA  
 Carl Glass  
 Andy Goin  
 Mary Kay Gondrezick  
 Google  
 Goss Family  
 Chyla Graham  
 Anthony & Connie Grandinetti  
 Anja Gratzner  
 Walter & Jan Grebing  
 Sean and Kathryn Groves  
 Susan Gutches  
 Thomas Halloran & Sara  
 Rivenburgh  
 Mark Halperin & Susan Lennox  
 Craig & Ranae Hamilton  
 Charles & Colleen Hamm  
 Gregory & Debbie Hammons  
 Harper Family  
 David & Becky Harrell

Haupt Family  
 John and Susie Hayes  
 Joseph Hayes  
 Sherri Hegland  
 Janet Hehn  
 Hendershot Family  
 Gary & Dianne Henry  
 Aaron & Audrey Heun  
 Aaron & Sara Hoffman  
 Jennifer Hoffman  
 Dave & Kathy Holland  
 Holmen Family  
 Holy Comforter Episcopal Church  
 Honeywell  
 Sandra Hopper  
 Horizon Organics  
 Jeanine Humphrey  
 Hunter Douglas  
 Johanna Hurley  
 i.o.t.k. media  
 Dr. Lawrence & Elizabeth Janowski  
 Eileen Jasica  
 Steve & Lynn Jeffers  
 Audrey & Paul Johnson  
 Wayne & Diane Johnson  
 Carmencita Jones  
 Jeff & Kim Jones  
 Rachel Jordan  
 Rachel Keaton  
 Keen Family  
 Keller Williams Realty  
 Kelly Family  
 Carol Kendall  
 Douglas & Diane Kerner

Keystone Pacific Property  
 Management  
 Keystone Place at Legacy Ridge  
 Kimley-Horn Foundation  
 Richard King  
 Joe & Mary Kovach  
 Kroger / King Soopers  
 Hilary Langston  
 Steve & Vicki Larson  
 Randy & Mary Law  
 LeBlanc Family  
 Jared LeFebre  
 Legacy High School  
 Warren & Barbara Leggate  
 Levene Family Foundation  
 Steven & Sally Lindbeck  
 Mark & Anna Lipshaw  
 James & Kristen Loesel  
 Kirk & Debbie Lopez  
 John Lopez  
 Lowery Family  
 Lumen Technologies  
 Lutheran Church of Hope  
 Rick Lutz  
 Steve & Lori Majors  
 Make Cool Stuff  
 Dennis & Holly Mallaney  
 Sarah Malouin  
 David & Maria Mankin  
 Manning Family  
 Dr. Bill & Jean Markel  
 Risha Marszowski  
 Magnolia Road  
 Len & Kathleen Martinez  
 Joanne Masica

Massy Family  
 Heather Matthews  
 Brandon & Sarah Mauch  
 Ken McCourt  
 Brennan McGlynn  
 Eleanor McKinley  
 McMath-Weadley Family  
 Scott & Judy McNary  
 Meals of Hope  
 Mean Street Ministries  
 BJ & Kelly Meyer  
 MHC Property Management  
 Joseph Michalsky  
 Mile High Transportation Services  
 Michael and Eloise Miller  
 Alex Moghadam  
 Nathalie Moir  
 Janice Moore  
 Julie Morse  
 Mt. Hope Lutheran Church  
 Mountain Aerospace  
 Mountain View Elementary  
 Mowery-Evans Family  
 Carl & Karen Muehlemeyer  
 Frederick Munro  
 Lakshmi Nandigramam  
 National Association of  
 Letter Carriers  
 National Charity League  
 Nativity of Our Lord Catholic  
 Church & School  
 Neessen Family  
 NetApp  
 Next Up Leadership Group  
 Noodles & Company  
 Nothing Bundt Cakes



In the fall of 2025, a government shutdown resulted in record numbers of Broomfielders seeking support. But we also saw our community meet that need through donations of time and resources. Neighbors walked in with checks, the city held food drives, children donated their allowances, and families, businesses, and students across the city rallied to organize fundraisers. Thank you, Broomfield. When your neighbors needed you, you showed up — and that made all the difference.



- |                               |                              |   |                                |
|-------------------------------|------------------------------|---|--------------------------------|
| Nowak Family                  | Jill Reigan-Johnson          | Skyestone Community                             | UQUAL                          |
| Mo Oleksa                     | Bev Reimer                   | Patrick Smith                                   | Vagher Family                  |
| Oliver Family                 | Reynolds Family              | Matthew & Maggie Soderman                       | Chris & Deborah van den Honert |
| Erdal and Mary Oskay          | Risen Savior Lutheran Church | Sonata Aesthetics                               | David & Shary Van Sant         |
| Ottem Family                  | Ritger Family                | Sonoco  | Viega                          |
| Our Broomfield                | Joe & Chris Roarty           | Spring Media                                    | Patrick Vigil                  |
| Outside Analytics             | Donald Robinson              | Sprouts   | John Vogt                      |
| Claude & Cheryl Overstreet    | Linda Robinson               | Scott & Mary Spuler                             | Jim & Lori Walcutt             |
| OXY Occidental Petroleum Corp | Kalin Rollings               | Standard Process                                | Walmart                        |
| David Painter                 | Rotary Club of Broomfield    | Joan Steele                                     | Christian & Evelyn Walter      |
| Pallas Family                 | Crossing                     | Karen & Todd Steele                             | Jamal Ward                     |
| Pallone Family                | Beverly Rourke               | Fred & Cindy Stricker                           | Scott & Carol Ward             |
| Parameters Research Lab       | Bob Rudland                  | Ann & Ron Studwell                              | Daniel Webb                    |
| Pascale Family                | RunSignup                    | Jay & Christy Swoboda                           | WeeCycle                       |
| Paul Derda Recreation Center  | Rupp Family                  | Robert & Michelle Szydowski                     | Camilla Weiss                  |
| Peak Utility Service Group    | Sacred Heart of Mary Parish  | Target  | Christopher & Kelly Wells      |
| Pearsall Family               | Safeway / Albertsons         | Melissa Tarr                                    | Richard Wendroff               |
| John Pearson                  | Alan & Mary Sanner           | Jeffrey & Lisa Templeton                        | Jon & Dion West                |
| Peoples Family                | Save A Lot                   | Terhar Family                                   | Westwood Professional Services |
| Katie Peterson                | Richard & Karyn Schad        | The Academy of Charter Schools                  | Whole Foods                    |
| Pigott Family                 | Karilyn Schaffer             | The Church of Jesus Christ of Latter-day Saints | Widespread Fitness             |
| Barry & Penny Platnick        | Kate Scheich                 | The Colorado Trust                              | Mary Jean Wilkie               |
| PNC Bank                      | Elizabeth Schultz            | The Grand of Broomfield                         | Chad & Lynn Winterboer         |
| Pogljajen Family              | Patrice Schulze              | The Salvation Army                              | Suzanna Wolf                   |
| Powell Family                 | Gary & Renee Schwark         | Lance & Heidi Thomas                            | Trudy Wood                     |
| Rod & Myrna Prentice          | Dayna Scott & Ken Langford   | David & Ellen Thorp                             | Steve & Terry Woods            |
| Prospect Ridge Academy        | Scouts BSA                   | Trader Joe's                                    | Natasha Wright                 |
| Darrell & Leah Quam           | Clark & Diane Scriven        | Tri City Elks #2541                             | Wu Family                      |
| Quinn Family                  | Marian Seder                 | Julie Trunzo                                    | Eric & Heidi Wuestefeld        |
| Benjamin & Sarah Ragsdale     | Thomas Seibel                | Tucci Fresh Produce                             | Gwen Young                     |
| Gary & Julie Raney            | Jonathan Sherrill            | Tuttle Family                                   | Mike & Janice Young            |
| Ben Rawlings                  | Sifuentes Family             | United Church of Christ                         | Martin & Pam Zadigian          |
| Realberry                     | Sill-TerHar Motors           | Uproot Colorado                                 | Janice Ziegler                 |
| Doug & Tina Reeves            | Simmons Family               |   | Gloria Zamora                  |
| Marie & Yon Regan             | Dave & Gale Simonson         |   |                                |





## Fellowship in Serving Humanity

Broomfield FISH  
6 Garden Center  
Broomfield, CO 80020

info@broomfieldfish.org  
Tel: 303-465-1600  
www.broomfieldfish.org



 @broomfieldfish  
 @broomfield-fi-s-h

Proud Member of the FRCA



Family Resource Center Association



**Broomfield  
FISH**

www.broomfieldfish.org